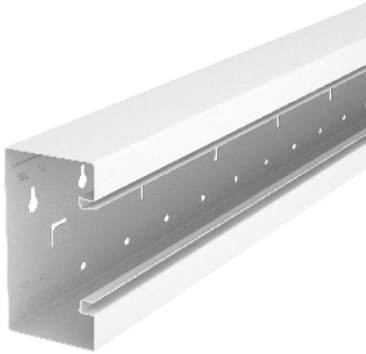


Device installation trunking, trunking height 70 mm



GS device installation trunking for mounting on the wall or on fastening panels. The GS device installation trunking possesses self-contacting locking straps to accept a sheet steel partition. The equipotential bonding between the trunking bases takes place using the trunking coupling. The protective measure and the equipotential bonding is guaranteed between the cover and the base by the self-contacting trunking cover. The real system opening is 76.5 mm. The cover must be ordered separately. Overlengths up to 3,000 mm for trunking bases and covers as well as other RAL colours can be provided on request. The visible surfaces of the painted device installation trunking are laminated.

Type	Colour	Length mm	Pack. m	Weight kg/100 m	Item No.
GS-S70130RW	Pure white	2000	12	289,000	6277200

St Steel

Dimensions

